

# Parish School of Our Lady of Kāpiti



## Newsletter - Wednesday 11 May 2016 Term 2

### RELOCATION RELOCATION RELOCATION

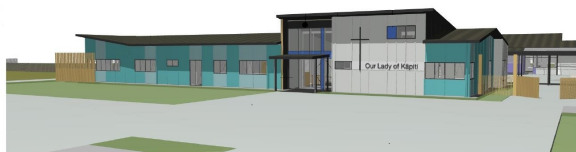
The school and church property has now been unconditionally sold. We have to vacate the current school building by Saturday 4 February 2017. We have set the start date for the new year in the new school as Tuesday 7 February. The property has been bought by the Kapiti Impact Church.

One of our parish communities - L'Arche (an International Federation dedicated to the creation and growth of homes, programmes, and support networks for people with intellectual disabilities) has purchased the field and started their programme to provide community housing.

The school building completion date is on track for us being able to have access by the end of Term 4 this year into all nine classrooms, hall and library/administration.

Later in June we are arranging with the contractors for an open day for the school and parish community to come and have a close look at progress. Watch this space.

Last Thursday plans were unveiled for the new church. The school design will complement the church providing one coordinated parish facility. Further detail will be available on the parish web site.



### CATHOLIC SCHOOLS' DAY 2016

MONDAY 16 MAY

*Extending Horizons of HOPE -  
Changing Lives...*

is the theme for this year's Catholic Schools' Day. This year we have the pleasure of sharing the day with three other Catholic schools - St Peter Chanel, (Ōtaki) St Josephs (Levin) and St Mary's (Foxton).

This is a day of celebration of our Catholic character sharing Mass, lunch and games together. Lunch is being provided by St Joe's school community.

We will all travel by bus to St Peter Chanel School in Ōtaki, and then to St Joseph's in Levin.

Mass will be around 11.30am at St Joseph's church and everyone is welcome to join us. We have all been asked to bring a food bank item to contribute to a shared offering at mass.

Parents are welcome to join us, but will need to make their own way there.

Please ensure children are at school before 8.50am that day as we cannot delay the buses for our trip.

**No supervision will be available at school that day.**

### PRAYING FOR OUR CHURCH AND SCHOOL

Please take some time to join with the shared prayer for our Parish on Sundays at 11.30am for 20 minutes at the site of our new church and school.

All welcome.

### IZAC FROMONT

Saturday 14 May is the anniversary of Izac Fromont's passing.

The family are holding an unveiling service at the graveside at Paraparaumu Beach cemetery at 11.00am.



**2016 BOARD OF TRUSTEE PARENT ELECTIONS**  
**NZ schools rely on our parent and school communities to govern our schools.**  
**Catholic schools also have four trustees appointed by the archbishop.**

Nominations are invited for the election of five parent representatives to the board of trustees.

A nomination form with explanatory notice has been mailed to all eligible people on the voting roll. Nominations will close on Friday 20 May at 12noon. The main roll of eligible voters is now available for viewing at the school office.

**ERO EXTERNAL REPORT MAY 2016**

The Board has now received the confirmed ERO report. Thanks to the Principal and staff for the hard work they put in to ensure the quality of our children's education.

Opening statements from the report

- The school's special character is encompassed in all aspects of school life.
- Students learn in a positive and supportive environment. They work well with peers demonstrating the competencies and shared value of the school and community.

The full report will be available on the school and ERO websites.

**Martha Stuart-Berrisford**

Chair, St Patrick's Board of Trustees



The current offer closes on Wednesday 1 June. Please make cheques payable to "Scholastic".

**PUBLIC NOTICES**

**Hoop Club Kapiti – Junior Basketball Coaching Programme** - restarts for Term 2 Sunday 8 May and runs through to Sunday 3 July at KDCDC Sportshall, Paraparaumu College, Mazengarb Road  
 9.30-10.30am 5 to 8 year olds  
 10.30-11.30am 9 to 13 year olds  
 11.30-12.30pm 13 to 17 year olds

All new players most welcome. Contact: Angelo Robinson 904 0142, [ar.rimutaka@paradise.net.nz](mailto:ar.rimutaka@paradise.net.nz)

**Kapiti Coast District Libraries** - the Council runs four libraries in the district and is currently asking customers to rate their services and surroundings in an online questionnaire. Go to <http://www.kapiticoast.govt.nz/libraries>

**English Language Partners NZ** - working with migrants and refugees. They offer one-to-one help anywhere in Kapiti (1-2 hours a week) and classes in Paraparaumu (2 hours a week). They help adults with using and understanding English from beginners to advanced, for new arrivals and those who have lived in NZ for years. It is free for most people. Phone 0800 NEW KIWI or 0800 639 5494.

**POSITIVE PUBERTY Year 6-8**

In Term 2 as part of our Health and Science focus, we will be teaching a Positive Puberty programme for Year 6-8 students.

A reminder that there will be a parents' meeting tonight (Wednesday 11 May) in the library starting at 7.00pm in the library, to outline the intended programme and answer any questions parents may have.

**COMING EVENTS TERM 2 2016**

DATE	EVENT
Thursdays	Assembly, 9.00am Grace Hall
Wed 11 May- Wed 22 June	Move to improve (gymnastics) all
Wed 11 May	Positive Puberty Parent mtg 7.00pm
Thurs 12 May - Thurs 23 June	Y4-8 Swimming
Mon 16 May	Catholic Schools Day Ōtaki/Levin
Thurs 19 May	Welcome assembly 9.00am Grace Hall
Wed 25 May	BoT mtg, 7.00pm, staffroom
Friday 3 June	Sacred Heart Mass, 9.30am, church
Monday 6 June	Queen's Birthday holiday
Tues 21 June	Kapiti College orientation Y8
Thurs 30 June	Excellence/Badge Assembly, 9.00am
Fri 1 July	Paraparaumu College orientation Y8
Fri 8 July	Mufiti Mania Day
Fri 8 July	End of Term 2
Mon 25 July	Start of Term 3

